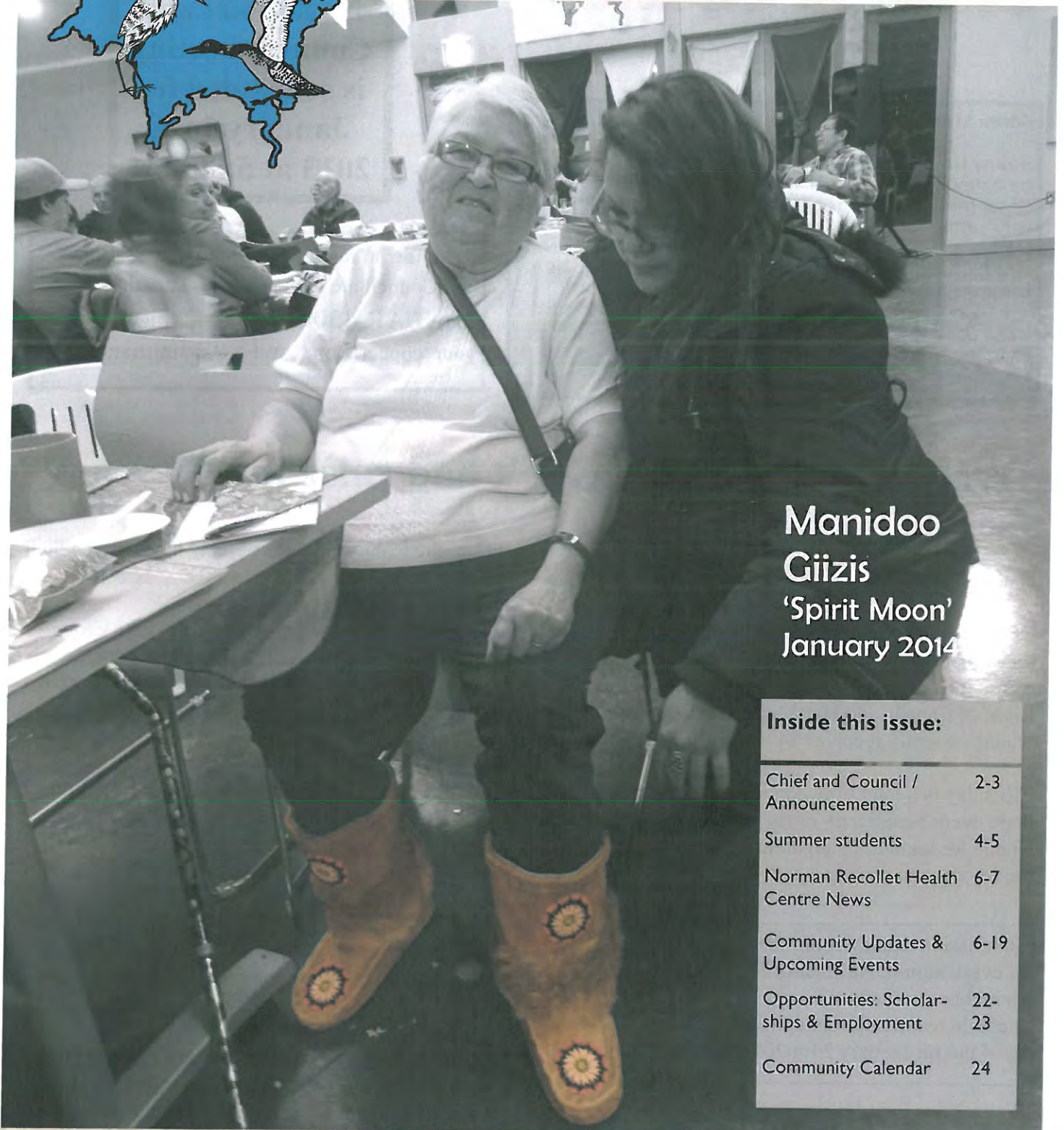




# Wahnapiitae First Nation Community Newsletter



**Manidoo  
Giizis  
'Spirit Moon'  
January 2014**

## **Inside this issue:**

Chief and Council / Announcements	2-3
Summer students	4-5
Norman Recollet Health Centre News	6-7
Community Updates & Upcoming Events	6-19
Opportunities: Scholar- ships & Employment	22- 23
Community Calendar	24

Elder Tina Mandamin was presented with handmade Mukluks at the Annual Christmas Party on December 21st, 2013. Tina has been head female elder for Wahnapiitae since its very first Pow Wow, over 18 years! Miigwetch for all your service Tina.





## ...Treaty beneficiaries haven't had raise in 138 years Continued from pg.2

*"Corporations have realized trillions of dollars in resource wealth from our territories. And various levels of government in Canada are taking big shares of that wealth, some of which rightfully belongs to the First Nations who agreed to treaties like Robinson Huron."*

Under the Robinson Huron Treaty, signed on September 9th, 1850, the Anishinabek ("Ojibewa Indians") agreed to share their lands and resources with the newcomers - approximately 35,700 square miles of territory. In return, the Crown, among other things, was supposed to pay annuities that were to be augmented from time to time.

The Chiefs are seeking an accounting, want the level of annuities increased, and are claiming compensation for losses suffered as a result of the Crown's failure to increase the annuities under the treaty, as promised. Today they gave notice to Canada and Ontario that they intend to commence a court action against the Crown should it refuse to engage in negotiations, or in the event negotiations fail. The Notice of Claim was served today at the Ontario Legislature at Queen's Park in Toronto on the Lieutenant Governor of Ontario, The Honourable David Onley. It will also be served on the Governor General of Canada, The Right Honourable David Johnston.

Serpent River First Nation Chief Isadore Day serves as Robinson Huron Treaty Commissioner for the Anishinabek Nation. "I am holding out hope that the Crown will choose to negotiate and engage in negotiations to settle our claim," he said. "We are in for a battle that could take a lot of time. I urge our citizens to be patient and to continue their support." Chief Day also noted that the number of beneficiaries is unknown. "I am a direct descendant of Wiindawtegowinini, a signatory chief. I am a beneficiary but my brother is not. Many beneficiaries were illegally disentitled to their treaty benefits through federal policy and legislation around 'status indians'. Treaty entitlement and Indian status are not the same thing. Our treaty predates the 1867 British North America Act and the Indian Act and it is constitutionally protected. I would say that trumps the Indian Act." Chief Day added: "While we as leaders wait for the next step in this litigation, our citizens can rest assured that the government-to-government relationship will be the focus of pressure from First Nation leaders across the treaty territory."

There are 21 First Nations parties to the Robinson Huron Treaty. All but Batchewana First Nation of Ojibways and Shawanaga First Nation participate in the Anishinabek Nation Grand Council. The Anishinabek Nation established the Union of Ontario Indians as its secretariat in 1949. The UOI is a political advocate for 39 member communities across Ontario, representing approximately 55,000 people. The Union of Ontario Indians is the oldest political organization in Ontario and can trace its roots back to the Confederacy of Three Fires, which existed long before European contact.

SOURCE: Anishinabek Nation,  
originally published in September 2012

**Union of Ontario Indians**  
P.O. Box 711  
North Bay, Ontario  
P1B 8J8

Tel: 705-927-4197  
Toll Free 1-877-702-5200  
Email: [info@anishinabek.ca](mailto:info@anishinabek.ca)  
Website: [www.anishinabek.ca](http://www.anishinabek.ca)



Cultural Connections for Aboriginal Youth & Drug and Alcohol Program

# Igniting the Light! Youth Leadership Forum

W  
I  
T  
H

Motivational Speaker  
& Inspirational Storyteller

## Earl Lambert



Earl Lambert is a young Cree Warrior who continues to live out his dream as a motivational speaker and inspirational storyteller!

His dynamic and entertaining way of combining music, magic, and humor with **inspirational life-lessons** has made him popular with First Nations across Canada.

He lives with a great sense of pride as a warrior walking the Red Road. Driven by his passion to motivate others to make positive life choices and live out their dreams, he remains committed toward inspiring others with the gift of his words!

**WHEN:** Friday, January 31st, 2014

**WHERE:** N'Swakamok Native

Friendship Centre, Backroom  
110 Elm St, Sudbury, ON

**WHAT:** This is an all day (9am –5pm) event with lunch provided.

**WHO:** Youth ages 13+

**WHY:** Connect, Uplift, Inspire.

**Door Prizes to be won.**

WFN Van will be taking youth (Gr 8-12) to this event.  
Call Debbie to book your place in the van 705-858-7700  
ext. 221. Van departs at 8 a.m. turns approx. 5:30







### Congregate Dining Update

On Thursday, December 19, 2013 twelve of our community seniors came out to take part in the celebration of Christmas. The evening started off with a scrumptious Chinese Dinner which was catered by the Peking Palace. Thank you Myles for picking it up for us. After dinner we played a fun gift exchange game. Lloyd had no problem wheeling around stealing gifts. We had a lot of fun and many laughs. A small gift was also given out to the seniors that were present. There was also 3 draws for plants. Rita Johnson won a poinsettia plant. Evelyn and Norman each won an English Ivy plant. All left over food was divided among the seniors. A good time was had by all!

Wendy Tyson—CWW







# Parenting

## PARENTING CLASSES:

What's your parenting style?

**A little something for everyone! Childcare is available.  
Lunch provided.**

**Date: Tues., Jan. 14 to Tues., Feb 18, 2014**

**Time: 10:30 am - 12:00pm Every Tuesday**

Parenting classes are facilitated by Erma Howe. After completion of the 6 week classes you will receive a certificate. Lunches and child care will be available. Wheelchair accessible.

**At N'Swakamok Native Friendship Centre**

**WFN van is available for transportation if required.**

If you would like to attend or need more information, please contact Debbie Plain-Mcgregor at WFN Centre of Excellence at 705-858-0610 ext. 221. Hope you can make it.



## Good Food Voucher Pickup

Still available for families with children aged 0-6  
 Friday, Jan 17, 2014  
 See Debbie at Band Office

**Fun Time** :)

M G D H S C A R F F O E I E W  
 D K S E D F M I T T E N S C D  
 I X T U C D R B A W D L Z U U  
 O E S P N E H O L I D A Y S U  
 U R I F P G M T S N O W M A N  
 P C O L D P X B Z T A H K U B  
 E B A Q U M O G E E B O L Y V  
 H C Q U J O N E Q R I I S S F  
 E E Y K T C K X Z V H P T Q X  
 K Q X S Y Y J L F S O E U E I  
 F O N Y G E M P L M K N A Y Q  
 Y O C N T Y N E N C M I M A M  
 W U H A S M D B A U C W I U Z  
 C Y G D B S Z J D J U L Q N O  
 J N Y A E B L Q P A D E C H G

Boots	Frost	Jackets	Sled
Cold	Hat	Mittens	Snow
December	Holidays	Scarf	Snowman
Fireplace	Ice	Skiing	Winter

## Food Bank

Call Debbie 705-858-7700 ext. 221 to book your spot in van. Available for families or individuals requiring assistance. Wed. Jan 22. If spaces fill up Wed. Jan 29 may be available.

It is January!



## There is free skating on Jan 31, 2014

Capreol Arena #1 ice	2-3 p.m.
Hanmer @ Centennial Arena	11:30-12:30 p.m.
Val Caron @Raymonde Plourde Arena	12-1 p.m.

**No transportation available**

## PUBLIC SKATING

Public skating schedules are pre-empted for special events. Please check the respective arena for changes. Please Note: Only CSA-approved skating aids are allowed on the ice surface. For rate purposes, adults are defined as 19 years and over. Seniors are defined as 55 years and over. Public Skating session fees for all applicable City of Greater Sudbury Arenas:

### Daily Fee

Seniors 55+ free  
 Adult \$4.20 per participant  
 Youth \$3.70 per participant  
 Family \$10.00 (maximum of 6 people per family)  
 Season Program Pass \$38.00

(Applicable to Adult Skating, Parents & Tots Skating, and Public Skating)

Capreol Community Centre / Arena #1 Ice Pad  
 Saturdays 7:00 p.m. to 8:30 p.m.  
 Start Date: October 12, 2013  
 Cancelled Date(s): January 25, February 8, February 15, March 1, March 22



# WFN CHRISTMAS BAZAAR 2013



On Sunday, December 8, 2013, the Christmas Bazaar took place at Wahnapiatae First Nation's Centre of Excellence. Several booths were set up by local artisans showcasing delicious Christmas treats and beautiful Christmas crafts, along with an information booth set up by Enahtig Healing Lodge. All proceeds from the Christmas Bazaar are towards the 2014 WFN Pow Wow. Fundraising efforts included gift wrapping, photos, a Taco Sale, and Pie Eating Contest bets.

The highlight of the event was the Chief & Council vs. Staff Pie Eating Contest. The participants included Chief Ted Roque, Council Secretary Juliette Scott, Councillor Rosalie Smith, Councillor Larry McGregor, Wendy Tyson, Joan Recollet, Nolan Roque, and Vince Roque. The winner of the Pie Eating Contest, to many's surprise, was Joan Recollet! The winner of the Pie Eating Contest Bets was Peter Recollet. Kchi-miigwetch to everyone that came out to the bazaar, to the craft and baked goods vendors, to all the volunteers and cooks, and to Crystal Osawamick for making it all a reality.





# Annual Xmas Party





# WFN's Land Use Plan Update

Ahnii, Aniish Naa? We are getting close to the finalization of our Land Use Plan. We will be hosting some focus groups and upcoming information sessions to obtain community feedback regarding resource management targets and planning zones. I encourage all members to attend, have your voice heard. We will be providing some information in the next few newsletters regarding our LUP and supporting information to help in keeping the community aware of our eco-system based approach to land and resource management! Baa Maa Pii Nitchkes

**Cheryl Recollet, MSc., EP**  
Environmental Coordinator

## WFN Land Use Plan 2013

Cheryl Recollet, Environmental Coordinator, Sustainable Development Department, WFN



LUP Goals: What are we trying to achieve in our Community? Why?



### Build a Healthy WFN Community

Preserve and strengthen governance.  
Protect and sustain WFN cultural heritage and resources.  
Develop a healthy and sustainable quality of community life.



### Protect and Conserve Lands, Water and Resources

Initiate an ecosystem-based approach to land and resource management.  
Apply a precautionary adaptive approach to land and resource decision making.



### Build an Ecologically Sustainable Economy for WFN

Assert WFN rights, title and interests.  
Access the benefits of resource development in the Territory while respecting the rights and needs of others.

## Resource Management Targets: Who and What are we going to focus on to achieve our goals?



**Cultural Heritage Resources**  
Practices, traditions, teaching, knowledge.



**South Ecosystems & Fish Habitat**  
Waters, physical habitats, species, ecological processes



**Terrestrial and Aquatic Wildlife**  
Terrestrial landscape, ecosystems, and plant and wildlife species



**Forest Resources, Forest and Soils**  
Timber and Non-Timber products, lands and soils.



**Energy, Recreation and Access**  
Commercial and Public use, access. Natural scenic quality.



**Mineral and Energy Resources**  
Mineral deposits, aggregates, renewables.



## Land Use Zones: How are we going to use our Land?

**Development Areas**

- Areas identified for specific types of development
- Residential, Commercial, Institutional, Cultural

**Restoration Areas**

- Areas that have been negatively impacted by industrial activities that need to be restored to a healthy condition.

**Protected Areas**

- Areas that have been identified for cultural and traditional activities.

**Stewardship Areas**

- Areas adjacent and outside of the reserve boundaries but within WFN territory.
- Wahnapitae River Watershed is multi-jurisdictional and WFN will need to work with partners.

## LUP Planning Process & Next Steps



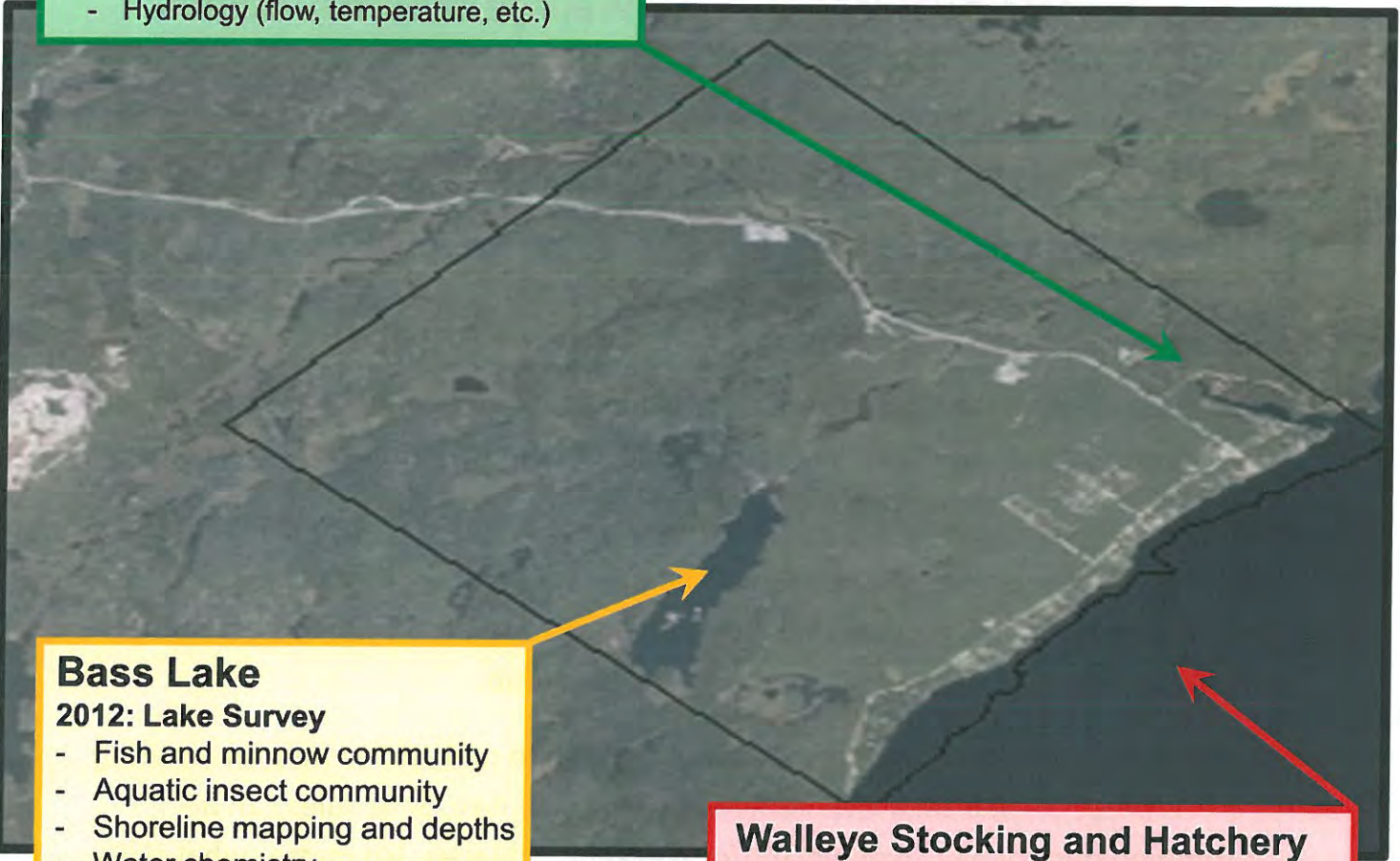


# Aquatic Habitats and Fish Communities



## Post Creek Assessment (2013)

- Habitat Assessment
- Fish community
- Aquatic insect communities
- Water and Sediment Chemistry
- Hydrology (flow, temperature, etc.)



## Bass Lake

### 2012: Lake Survey

- Fish and minnow community
  - Aquatic insect community
  - Shoreline mapping and depths
  - Water chemistry
- Report is currently being finalized



## Walleye Stocking and Hatchery

- WFN in partnership with the Lake Wahnapitae Home and Campers Association, the Lake Wahnapitae Stewardship Committee and the Trailsmen Rod and Gun Club, are taking the initial steps to one day have our very own **Lake Wahnapitae Walleye Hatchery**.
- In 2014, we will be offering volunteers and funding to an existing hatchery, to gain the knowledge and experience for our future operation





# Gikendaasowin Reclamation Project

*A Traditional Ecological Knowledge / Land Use Study of Wahnapiatae First Nation*

Wahnapiatae First Nation's Gikendaasowin Reclamation Project aims to collect, document, preserve and **RECLAIM** the Gikendaasowin of Wahnapiatae First Nation.

*Where do you hunt? Fish? Gather berries or medicines?*

*Can you share any harvesting techniques or recipes?*

*What sorts of stories or legends do you know about Wahnapiatae?*

*Do you know of old travel routes? Locations of old cabins?*

*Do you know of any local place names? Anishinaabe names?*

*What makes Wahnapiatae home?*

**WHAT IS WAHNAPIATAE'S STORY?**



*All information will remain confidential. The data gathered from this study will be stored in a database and used for future land use planning, resource management, and environmental monitoring.*

If you are interested in sharing and preserving Wahnapiatae's Gikendaasowin, contact Heidi Manitowabi at 705 858 0610 x 212 or [heidi.manitowabi@wahnapiataefn.com](mailto:heidi.manitowabi@wahnapiataefn.com) to arrange an interview session.

## What is "Traditional Knowledge"?

Traditional Knowledge is the knowledge of the Anishinaabe people to continue as sustainable people of this land.

Traditional Knowledge recognizes First Nations inherent, constitutional and treaty rights.

The Anishinaabe people have a *relationship* to Traditional Knowledge; it is found in community beliefs, teachings, culture, language, and the land. Traditional Knowledge is interconnected with the land and community. The special connection to the environment, and the role we were given as Anishinaabe people to be stewards of the land, IS traditional knowledge.

## Why is Traditional Knowledge important?

There is a major concern within First Nations communities that Traditional Knowledge is *disappearing* as it is not being practiced and/or taught to the newer generations. We, as First Nations people, need to be aware and involved in the protection and preservation of our Traditional Knowledge out of respect for our ancestors who worked very hard to protect our knowledge, language and culture.

## What is the Anishinaabe word for "Traditional Knowledge"?

Gikendaasowin literally translates into "Knowledge of the Earth". Mother Earth is our original teacher.

## What is WFN doing to protect and preserve Traditional Knowledge?

WFN is currently conducting the Gikendaasowin Reclamation Project, a traditional knowledge study. This study is an ongoing project that will collect, document and preserve Wahnapiatae's Gikendaasowin and bring it to life.





# ANISHINAABEMOWIN ONLINE VIRTUAL CLASSROOM

*With Isadore Toulouse*



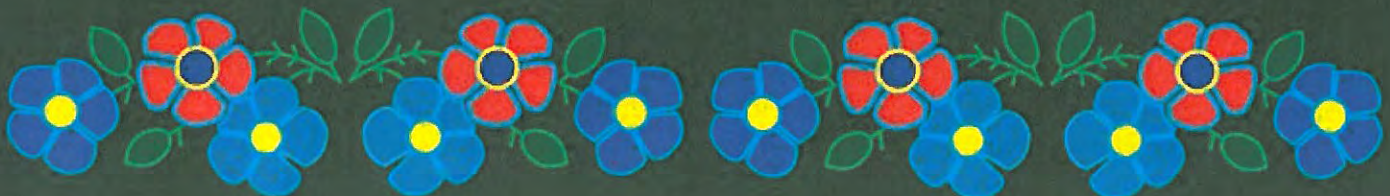
*“Isadore Toulouse Nidishnikas  
Wikwemikong Ndoonjiaa  
Nswi Aandegok  
Ndoo-anishinaabe Noozwin”*

**LEARN THE DYNAMICS OF  
ANISHINAABEMOWIN  
IN A FREE LIVE VIRTUAL CLASSROOM!  
STARTING JANUARY 8, 2014.**

**THEN EVERY WEDNESDAY  
MORE INFORMATION COMING SOON  
PLEASE LIKE OUR FACEBOOK PAGE**



“Online Anishnaabemowin”





# Employment Opportunity: Secretary

In accordance with our Employment Equity goals for this position, applications from people of Aboriginal Ancestry are particularly encouraged.

**Position:** SECRETARY      **Term:** Full Time Position  
**Location:** Sudbury      **Salary:** dependent on qualifications and experience

## GENERAL ACCOUNTABILITIES

Responsible for reception and clerical duties such as greeting clients, visitor and referring to the appropriate staff person. This position entails providing administrative services to all staff and maintaining of filing, inventory and contact information.

- Greet people coming into the office, direct them to the appropriate contacts or services and ensure resource room clients sign in;
- Scheduling appointments for Employment Services Officers and maintain monthly calendars;
- Coordinate flow of information internally and maintain all office forms;
- Organize, maintain, and coordinate office records and files in their proper locations;
- Answer telephones and record and relay messages;
- Receive and direct faxes – send faxes for staff;
- Type and proofread correspondence, reports;
- Photocopy and collate documents for distribution;
- Maintain and update manual or computerized filing, inventory & mailing and contacts systems;
- Open, sort and route incoming mail and outgoing mail;
- Set up corporation meetings and workshops, including logistics;
- Maintain inventory of office supplies including purchase orders and receiving shipments;
- Track monthly the postage and photocopier meter readings;
- Prepare and maintain up to date monthly calendars ;
- Record and prepare staff meeting minutes and board meetings as requested;
- Distribute client cheques and assist with bookkeeping tasks ie. bank reconciliations;
- Light cleaning such as coffee cups and emptying trash cans.

## POSITION QUALIFICATIONS

- Completion of secondary school;
- Completion of College program or other courses in general office administration;
- Ability to operate computer, software programs and other office equipment;
- Two years related work experience.

**WORKING CONDITIONS:** Typical office environment; Valid driver's license would be an asset.

**CLOSING DATE: Thursday, January 30, 2014 @ 4:00 p.m.**

Please forward application to:

Debbie Recollet  
General Manager  
117 Elm Street, Unit # 102  
Sudbury, ON  
P3C 1T3  
[debbier@gezhtoojig.ca](mailto:debbier@gezhtoojig.ca)



For further information please contact Debbie Recollet.

You must get verification from Gezhtoojig Employment & Training that your application has been received. Only applicants eligible for an interview will be contacted.



# DibAAjIMOOWINAN

GEZHTOOJIG EMPLOYMENT & TRAINING

## JANUARY WORKSHOPS

- Interview Skills**..... Thurs. Jan. 09, 2014  
**Resume & Cover Letter**.....\*Tues. Jan. 14, 2014  
**Job Search**..... Thurs. Jan. 23, 2014  
**Programs & Services**..... Thurs. Jan. 30, 2014  
**(10:00 a.m. - 12:00 p.m.)**



***Enter to WIN... \$50.00***  
***(Wal-Mart Gift Certificate)***

***Hot Chocolate, Coffee, Tea & Snack***  
***Available for Participants***

**GET JOB READY...REGISTER TODAY!**

Contact: Kim...705-524-6772  
(kmurray@gezhtoojig.ca)

**WE ARE LOCATED NEXT TO...**  
Hard Rock 42-Gastro Pub, Day's Inn  
117 Elm St., Unit 102, Sudbury  
Parking Available

**EMPLOYMENT  
ONTARIO**  
Ontario's employment & training network

**Canada**



Gezhtoojig Employment & Training, 117 Elm St., Unit 102, Sudbury, ON P3C 1T3

Tel: 705-524-6772 Toll: 1-800-361-9256 Fax: 705-524-5152

[www.gezhtoojig.ca](http://www.gezhtoojig.ca)